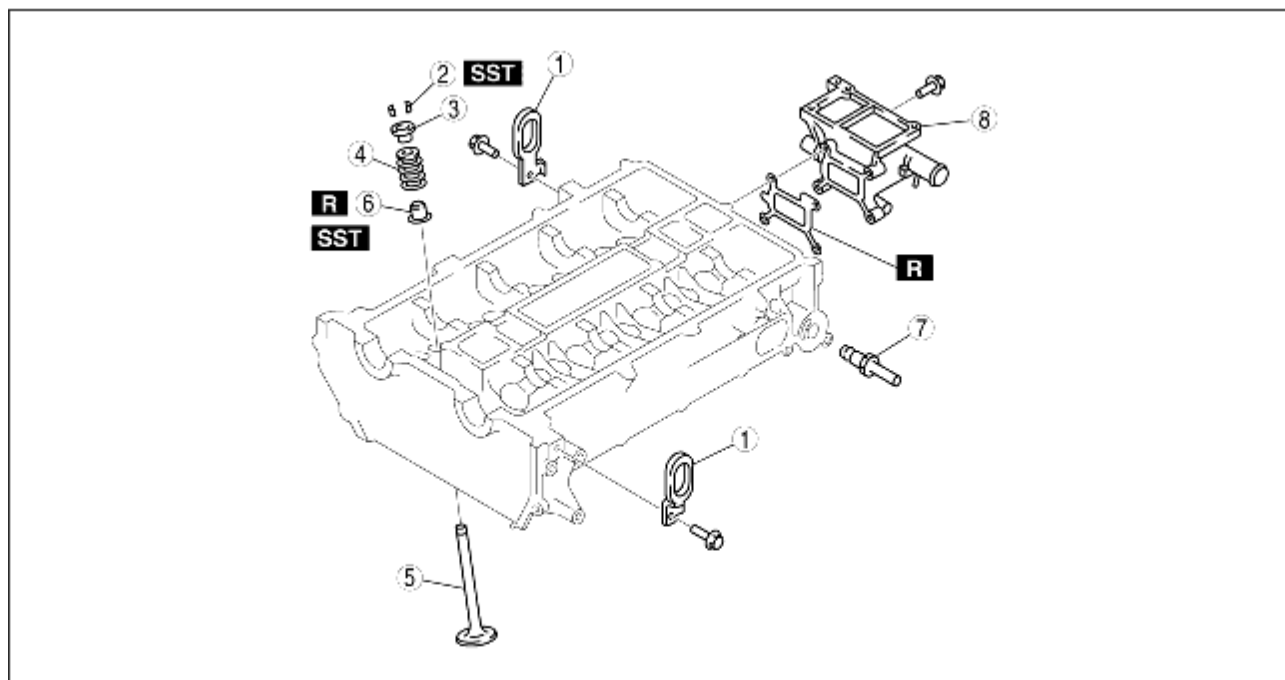


CYLINDER HEAD (II) DISASSEMBLY

B3E011002000205

1. Disassemble in the order indicated in the table.



B3E0110 E060

1	Engine hanger
2	Valve keeper (See Valve Keeper Disassembly Note.)
3	Upper valve spring seat
4	Valve spring
5	Valve
6	Valve seal (See Valve Seal Disassembly Note.)
7	EGR pipe
8	Water outlet case

Valve Keeper Disassembly Note

1. Remove the valve keeper using the **SSTs**.

Valve Seal Disassembly Note

1. Remove the valve seal using the **SST**.

